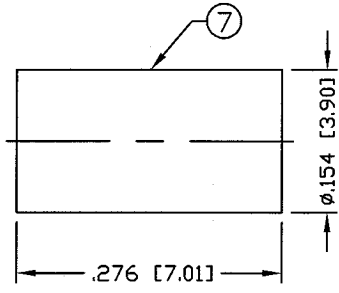
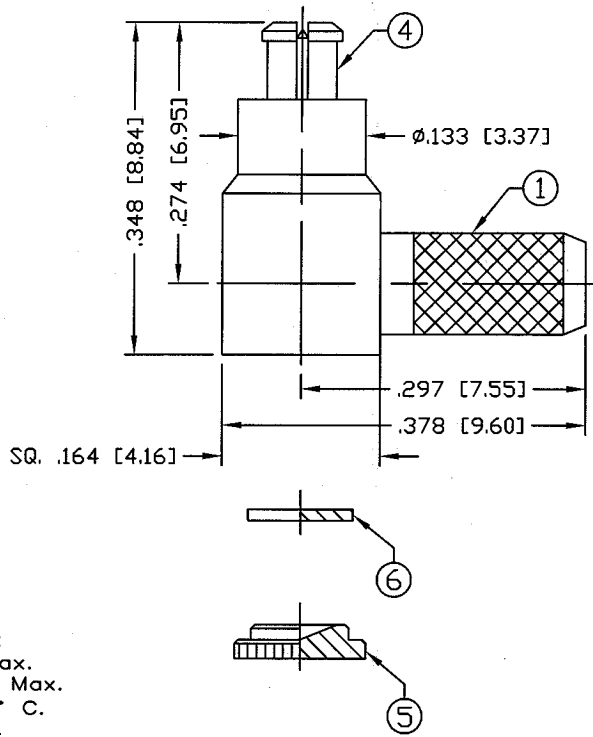


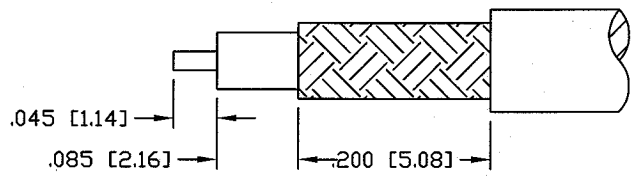
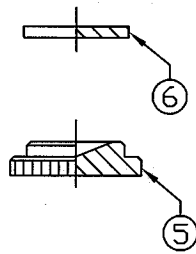
THIS DRAWING CONTAINS INFORMATION PROPRIETARY TO RF INDUSTRIES,  
 ANY UNAUTHORIZED USE OF THIS DRAWING IS EXPRESSLY PROHIBITED  
 WITHOUT WRITTEN PERMISSION FROM RF INDUSTRIES.  
 ANY VIOLATION IS PUNISHABLE UNDER U.S. COPYRIGHT LAWS.

ALL DIMENSIONS ARE REFERENCE ONLY

PART NO.		<b>RMC-6010-B</b>		
REV	DESCRIPTION	DWN	DATE	APPROVED
-	ENGINEERING RELEASE	CZS	9/4/00	JDMc
A	UPDATE SPECS	JDM	7/18/01	JDMc



USE HEX CRIMP DIE .130



RECOMMENDED STRIPPING DIM'S

IMPEDANCE: 50 Ohms  
 FREQUENCY RANGE: DC TO 8 GHz  
 VSWR: 1.15 + .015 x √F (GHz) Max.  
 INSERTION LOSS: .07 F(GHz) dB Max.  
 TEMPERATURE RANGE: -25° / +125° C.  
 VOLTAGE RATING: 170 V rms Max.  
 DIELECTRIC WITHSTANDING VOLTAGE: 500 V rms min.  
 CONFORMING TO SECTION 15.203 FCC REQUIREMENTS.

FOR RG-174, 188, 188A, 316/U, ALPHA 9174, 9316,  
 BELDEN 8216, 83269, 83284, 84316 & TIMES LMR-100A CABLE

1	BODY	1	BRASS	NICKEL, 100 MICRO	007777	
2	INSULATOR	1	PTFE	----		
3	PIN	1	P. Cu.	GOLD, 30 MICRO		
4	GROUND RING	1	Be. Cu.	GOLD, 3 MICRO		
5	CAP	1	BRASS	NICKEL, 100 MICRO		
6	INSULATOR	1	PTFE	----		
7	FERRULE	1	BRASS	NICKEL, 100 MICRO		
8						
9						
10						
11						
12						
13						
14						
#	DESCRIPTION	QTY	MATRL	FINISH	APPROVALS	DATE

UNLESS OTHERWISE SPECIFIED:  
 1. REMOVE ALL BURRS  
 2. BREAK ALL CORNERS & EDGES .005 R. MAX.  
 3. CHAMFER 1ST & LAST THREADS 45°  
 4. SURFACE ROUGHNESS 63 FINISH MIL-STD-10  
 5. DIAMETERS ON COMMON CENTERS TO BE CONCENTRIC WITHIN .002 T.I.R.  
 6. ALL DIMENSIONS ARE AFTER PLATING.

DIMENSIONS ARE IN INCHES AND [MILLIMETERS]  
 UNLESS OTHERWISE NOTED TOLERANCES ARE:  
 DECIMALS      DIAMETER  
 .XXX±.003 [.08]      .XXX±.001 [.03]  
 .XX±.005 [.13]      .XX±.003 [.08]

**RF connectors**  
 DIVISION OF RF INDUSTRIES, LTD.  
 7610 MIRAMAR RD  
 SAN DIEGO, CA 92126  
 (858) 549-6340  
 (858) 549-6345 FAX

**MC PLUG**  
 RIGHT ANGLE, CRIMP

SIZE	CABLE GROUP	DWG NO.	REV
A	B	RMC-6010-B	A
SCALE: NTS		CAD FILE OUTLINE	SHEET 1 OF 1